



BioGraph Infiniti Rehab Online Course

is designed for beginner users of **MyoTrac Infiniti** systems with the **Rehab Suite**. Its goal is to meet the training needs of clinicians, researchers and other health professionals who want to learn how to use the latest biofeedback technology for muscle rehab. This course will be focusing on surface EMG signals. This online course introduces the user to the functionality, power and versatility that the Infiniti platform has to offer.

All online courses are accredited by BCIA to fulfill the continuing education requirements for recertification.

Online Course Benefits

- No travel expense- learn from the comfort of your own home or office.
- All courses are limited to a maximum of 3 participants to ensure individual attention.
- Rotating monthly courses allow for great flexibility with your schedule.
- The participants will get the benefit of a “hands-on” learning experience of this powerful physiological tool.
- The online course has a total of 6-hours of instruction given over the internet. The six hours are divided into four 1.5-hour lessons given twice a week for two weeks.

COURSE OBJECTIVES

Objectives are set at the beginning of the course with the instructor and with the goal to meet the objective before the end of the Course. This online course will focus on the **Myotrac Infiniti** system you use along with the specific sensors needed to effectively utilize the Rehab features. The goal of this course is to make beginners feel comfortable using the **BioGraph Infiniti** software and **Rehab Suite** with their hardware, and to offer advanced users an overview of the full clinical potential of their systems. Participants will learn the basics of the **Rehab Suite** such as how to prepare and record a session, how to review, interpret, and report their data. They will also be able to identify various hardware accessories and software suite items, and understand how to properly engage them for effective session use.

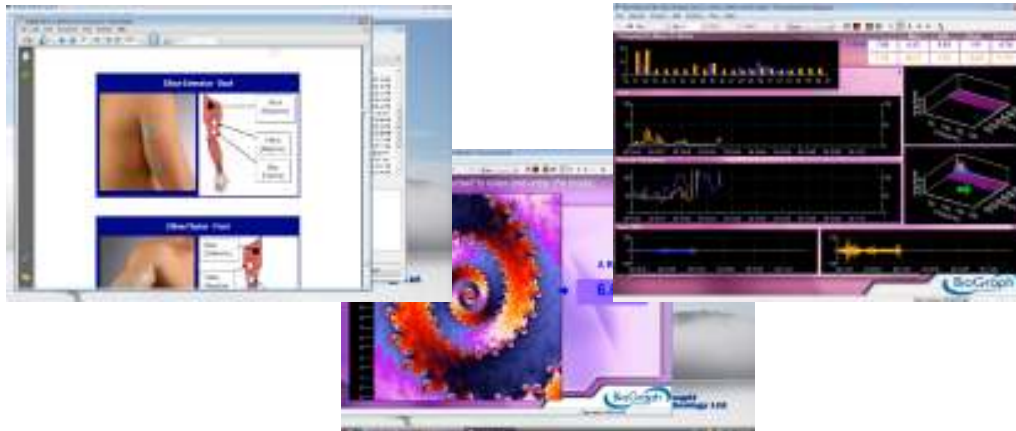
LEARNER OUTCOMES

At the end of this 6-hour course participants will :

- Have acquired a good understanding of their equipment and suite software.
- Be able to identify and briefly describe the measurements generally used in muscle rehabilitation biofeedback.
- Learn to explain what a virtual data-channel is and how it is related to the raw data from the physical sensor.
- Learn to define what is artifact and why is artifact rejection necessary.

Lesson 1: Introduction and Setting Perimeters

In lesson 1, you will be introduced to the EMG hardware, software, and accessories, learning about such parameters as notch filters, EMG frequency signals, and client data history screens. You will also select your channel sets, specific display screens and learn proper electrode placement in order to begin an open session. You will be shown button bar controls, impedance checking, how to zero EMG sensors, display screen / instruments adjustments, how to mark events, and save recorded data.

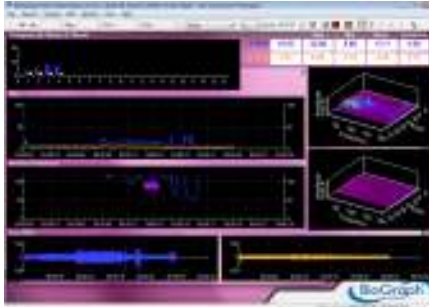


Lesson 2: Running and Reviewing an Open Display Session

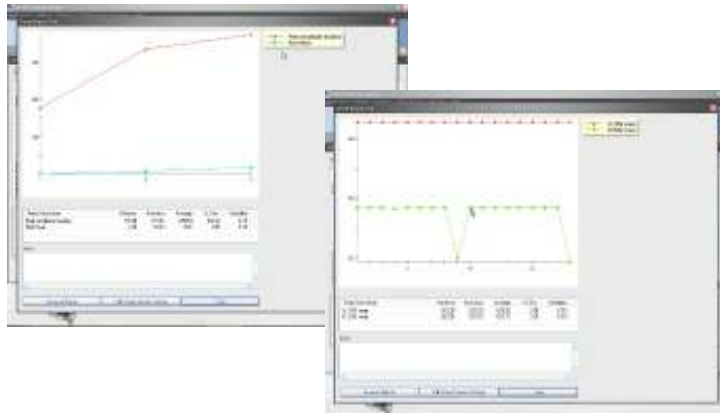
In lesson 2 you will learn how to modify your parameters depending on what specific aspect of EMG you desire to train. You will learn how to edit channel sets and use virtual channels and screens changing the settings on-the-fly. You will learn how to record and review an open display session. You will review open sessions, report screens, pop-up menus, listing of data channels, button bar controls, markers, artifact rejection features, multi-line graphs, saving report screen settings for client, and importing client data.



Lesson 3 & 4: Run and Review a Scripted Session and Managing Reports



You will learn how to run and review a scripted session. Once you have selected your scripted session, you will review the screen assessment protocol prior to running a scripted session. You will learn how to prepare your session data once you have run a session. In report-review mode, you will select and look at different segment statistical values, determine and remove segment rejection, and select event marker labels. You will learn how to access, design, and use trend reports. You will learn how to select the various parameters in which to view the collected data in trend reports, e.g., peak amplitude, mean, activity set list, etc.



This course is intended for licensed health professionals and those participants seeking BCIA certification if they are not already certified. As this online course is a "hands-on" learning experience, you are required to use your equipment online including computer with software, encoder and sensors. Also required are: High speed internet, Skype™ and GoToMeeting software and user ID, headset and microphone.

INSTRUCTORS:

The following is a list of the outstanding presenters who instruct the online courses and will guide you to a better understanding of your instrumentation:

Pedro Teixeira. Pedro Teixeira is a Licensed Physical Therapist (Licenciado em Fisioterapia) in Oporto, Portugal. Pedro is the Biofeedback Foundation of Europe Project Manager for International Research & Education Projects that focus on surface Electromyography. Pedro is the co-author of an 80-hour Post Graduate Course entitled "Introduction to Surface Electromyography". In addition to completing a first year towards a Masters Degree in Science of Physical Therapy at the Technical University of Lisbon, Pedro has successfully completed European continuing medical education courses on movement dysfunctions and biofeedback. Pedro then worked in rehabilitation and sports with the Portuguese National Team in Basketball, and in other high level sports teams in Rugby, Tennis, and Surfing. For the last four years Pedro's clinical work has focused on pain management and rehabilitation using surface electromyography and other physiological signals that provide information on psychosomatic symptoms. Pedro instructs BFE online courses on Surface Electromyography in English and Portuguese.

Russell Hughes. Russell Hughes has over 15 years experience in Sports medicine and orthopaedic rehabilitation. He has worked extensively at various national sporting events and with many national level organizations and athletes. Presently Russell is the Editor-in-chief of a sports medicine newsletter for a Quebec based physiotherapy clinic chain and is working closely with the Quebec distributor for the Myotrac Infiniti and is responsible for the clinical instruction of the software in Quebec. Russell can offer course instruction in both French and English and has special interest in sEMG as it applies to sports medicine. He has over 15 years experience in Sports medicine and orthopaedic rehabilitation.

FOR MORE INFORMATION OR TO REGISTER VIA TELEPHONE:

Workshop Coordinator
Thought Technology Ltd.
2180 Belgrave Avenue
Montreal, QC, Canada H4A 2L8

Tel: 1-800-361-3651 ext. 135
Tel: (514) 489-8251 ext. 135 Fax: (514) 489- 8255
E-mail: workshops@thoughttechnology.com
Internet: www.thoughttechnology.com/intro.htm

CANCELLATION POLICY: Cancellations must be received in writing if requested **prior to 1 week before the course date.** You will receive credit towards a future course minus an administration fee of US\$ 50. Cancellations after this date forfeit registration fee. Thought Technology Ltd. reserves the right to cancel the course with full refund.